

## Who We Are

Nearly 25 years ago, Quest Couch and Heidi Kenny were operating Quest Productions, a company specializing in high-end corporate multimedia. The still photography required for this type of work necessitated fast setups on location, under a variety of circumstances. These demands led to the development of the LumiQuest line of flash accessories. From our very first designs, the emphasis was on simple light modifiers that worked rather than gimmicks that would sell.

This mission has led to over 25 different devices designed to solve real lighting problems in the field. All of our light modifiers serve specific purposes by combining the photographers' needs with the basic laws of physics to create simple, effective accessories that work.

We continue to listen to photographers' problems and share their vision ... to help them create images that are beyond their wildest dreams.



Quest



Heidi

## Satisfaction Guarantee

We have an ongoing program that focuses on improving existing products in order to offer our customers the very best value possible.

If for any reason you feel that the LumiQuest product you purchased did not live up to your expectation, you can return it to us for replacement or refund.

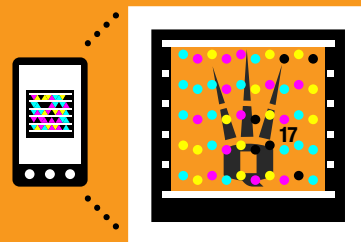
Printed in China with soy inks.

## How The Products Work

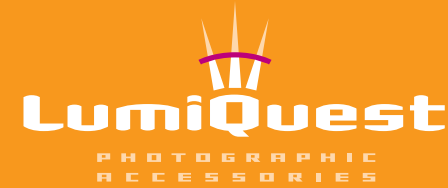
A photographic flash is a small, intense source of light that produces very harsh shadows. In addition, it is often coming from an unnatural source on or very near the camera. The quality of this light has been a concern to photographers since the introduction of flash. The process of softening the shadows is actually both simple and consistent with the basic laws of physics.

Unquestionably, the most significant factor in determining shadow quality is the size of the light source. If the photographer can enlarge the light source and have it coming from a more natural direction, it will be a significant improvement over direct flash. All of our bounce and diffusion devices enlarge the light source and, at least to some degree, move it farther from the camera. Our unique designs give our accessories two distinct personalities...they fold flat for storage and attach to your flash in a rigid three dimensional position to predictably modify and control the light. LumiQuest accessories can be attached to your flash with our UltraStrap, the most secure non-adhesive flash mounting strap available, or use the self-adhesive Velcro® that is included with every product.

For over two decades, LumiQuest has offered the most effective and comprehensive line of photographic flash accessories in the world. Our bounce and diffusion devices serve to improve flash photography for millions of professionals and serious amateurs.



Use your smart phone to watch our video.  
Download the app at <http://gettag.mobi>



Follow us on:   

28540 Durango Drive • New Braunfels, TX 78132  
830.438.4646 • [www.lumiquest.com](http://www.lumiquest.com)



## Quik Bounce

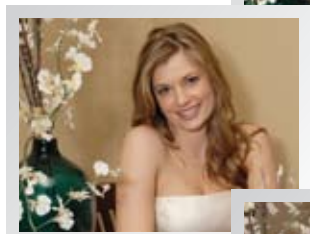
Model # LQ-122

The **Quik Bounce** is designed for use with or without a ceiling to soften the light and transition from horizontal to vertical format without having to adjust or remove the Quik Bounce from the flash. The unique design has doors that can be opened to allow 80% ceiling bounce while redirecting 20% of the light forward to "fill" the shadows cast by the ceiling bounce. When there is not a low, neutral ceiling available to bounce the light, the doors remain closed and 100% of the light is redirected forward.

**Application:** To soften shadows and reduce unpleasant red eye. Unique design allows for shooting with or without a ceiling in both horizontal and vertical formats. Ideal for wedding and event photographers.

**Light loss:** (Doors closed) Approximately 1 1/3 stops. (Doors opened) Variable depending on ceiling height.

**Dimensions:**  
Folds flat to  
5 3/4" x 7 1/2"



Direct Flash

Quik Bounce Open



Quik Bounce Closed

## Pocket Bouncer

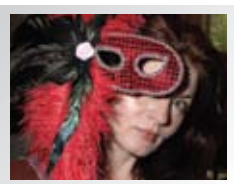
Model # LQ-101

The **Pocket Bouncer** redirects light at a 90° angle from the flash to soften the quality of the light by enlarging the light roughly 6-8 times over the flash head itself. While no exposure compensation is necessary with automatic flashes, operating distances are somewhat reduced.

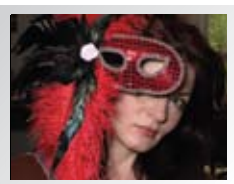
**Application:** To soften flash light quality with minimal light loss; to be used with slaves or alone where low ceilings are not available or where more direct but softer fill light is desired.

**Approximate Light Loss:** 1 1/3 stops

**Dimensions:** Folds flat to 4 1/2" x 7 1/4"



Direct Flash



Pocket Bouncer

## MidiBouncer Model # LQ-110

The **MidiBouncer**, like the Pocket Bouncer, softens the shadows by enlarging the light source. The MidiBouncer is roughly 6-8 times the size of the flash head itself and was designed for use with large professional flashes such as Metz, Sunpak®, etc. It redirects the light at a 90° angle from the flash to soften the quality of light and distribute it over a wider area.

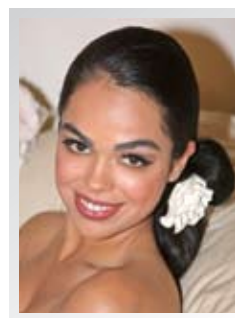
**Application:** To soften flash light quality with minimal light loss. To be used with slaves or alone where low ceilings are not available



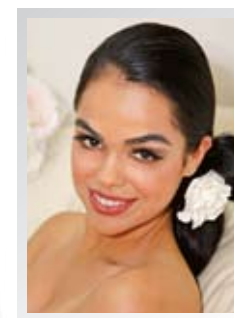
or where more direct but soft fill light is desired.

**Approximate Light Loss:** 1 1/3 stops

**Dimensions:** Folds flat to 5 1/2" x 8 3/4"



Direct Flash



Midi Bouncer

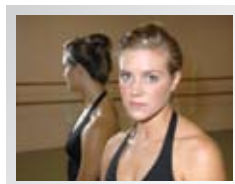
## 80-20 Model # LQ-102

The **80-20** allows 80% of the light to pass through the device, to be redirected by another surface, most likely a ceiling. The remaining 20% is redirected forward toward the subject to fill the shadows cast by the ceiling bounce.

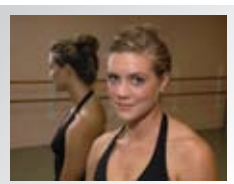
**Application:** To effectively deliver "two light" lighting with one flash. This device illuminates the scene with light bouncing off the ceiling while providing "fill" light off the bounce device itself. For use in situations in which an 8-9 ft. neutral colored ceiling is available.

**Light Loss:** Variable depending on ceiling height.

**Dimensions:** Folds flat to 4 1/2" x 7 1/4"



Direct Flash



80-20

## ProMax System Model # LQ-105

The **ProMax System** is a six-piece photographic flash light modification accessory kit. The system includes an 80-20 ceiling bounce device complete with interchangeable white, gold and silver inserts as well as a removable frosted diffusion screen.

**Application:** The ProMax System enables the photographer to deal with a variety of different lighting situations on location, maximizing the potential of the shoe and handle mount flash unit.

**Approximate Light Loss:** 80-20: Variable depending on ceiling height.

**With Inserts:** White: 1 1/3 stops, Gold Metallic: 1 stop, Silver Metallic: 2/3 stop

**With Frosted Diffusion Screen and Inserts:** White: 2 1/3 stops, Gold Metallic: 2 stops, Silver Metallic: 1 2/3 stops

**Dimensions:** 5" x 8"

## Ultrasoft Model # LQ-103

The **Ultrasoft** redirects the light at a 90° angle from the flash enlarging it 6-8 times over the flash head itself and then further softens the light by passing it through a frosted diffuser.

**Application:** To soften shadows and evenly illuminate a scene with a compact light modifier. For use on an individual flash or to softly illuminate the background in a multiple flash set up. Ideal for close-ups and portraits.

**Approximate Light Loss:** 2 1/3 stops

*Ultrasoft continued next page.*



**Dimensions:** Folds flat to 4 ½" x 7 ¼"



Direct Flash



UltraSoft

### Big Bounce Model # LQ-104

The **Big Bounce** redirects and softens the light in the same manner as the UltraSoft, with even softer results since it is roughly 20 times the size of the flash head itself.



**Application:** For use where a softer lighting effect is more important than "pocket size" portability. It is ideal for close-ups, portraits, etc. Fits the same wide range of flashes as other LumiQuest models.

**Approximate Light Loss:** 3 stops

**Dimensions:** Folds flat to 8 ½" x 10 ¾"



Direct Flash



Big Bounce

### SoftBox LTp Model # LQ-124

The **SoftBox LTp** is roughly twice the size of our SoftBox III. The surface area is over 40 times that of the flash itself producing the softest shadows of any LumiQuest SoftBox. The LTp is designed exclusively for off-camera use.



**Application:** For those who have a laptop pocket

in their camera bag/backpack and wish to use this feature to conveniently carry a larger SoftBox with over 120 sq. in. of surface area.

**Light Loss:** 1 ½ stops

**Dimensions:** 10" x 14"



Direct Flash



SoftBox LTp

### SoftBox III Model # LQ-119

The **SoftBox III** is roughly twice the size of our original SoftBox, approximately 20 times the size of the flash head itself, thereby producing considerably softer shadows. Like the original SoftBox (LQ-107), the SoftBox III is center weighted but is large enough to block autofocus assist and interfere with auto exposure UNLESS you are using TTL metering.



**Application:** To produce the softest possible shadows from a SoftBox capable of on-camera use.

**Approximate Light Loss:** 1 ¼ stops

**Dimensions:** Folds flat to 8" x 9"



Direct Flash



SoftBox III

### SoftBox II Model # LQ-109

The **SoftBox II** is designed for use on bare bulb flashes such as Lumedyne, Quantum Q Flash and Sunpak® 120J. It enlarges the



light roughly 15-20 times that of the flash head itself.

**Application:** To soften shadows and eliminate unpleasant red eye.

**Approximate Light Loss:** 1 ¼ stops

**Dimensions:** Folds flat to 6 ¼" x 7 ¾"



Direct Flash



SoftBox II

### SoftBox Model # LQ-107



The **SoftBox** diffuses the light with the flash in the direct flash position. The light is softened and more evenly distributed as

it passes through a center-weighted, frosted diffuser enlarging the light source to

roughly 10 times the size of the flash head itself.

The unique design does not block either exposure sensors or auto focus assist beams on most flashes.

**Application:** To achieve a softer look with reduced shadow definition. For use on an individual flash or to softly illuminate the background in a multiple flash set up.

**Approximate Light Loss:** 1 ¼ stops

**Dimensions:** Folds flat to 5" x 7"



Direct Flash



SoftBox

### Mini SoftBox Model # LQ-108

The **Mini SoftBox** diffuses light with the flash in the direct flash position. It enlarges the light source 4-5 times the flash head itself. Unobtrusive and low

profile, it is ideal for press and other fast moving situations.

**Application:** To soften shadows and eliminate unpleasant red eye.

**Approximate Light Loss:** 1 stop

**Dimensions:** Folds flat to 3 ¾" x 4 ¾"



Direct Flash



Mini SoftBox

### UltraBounce Model # LQ-116

The **UltraBounce** distributes the light over approximately 180°

so that it can bounce off walls and ceilings to evenly illuminate a scene.

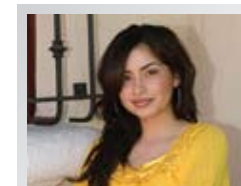
The opaque sensor screen keeps the light from affecting the automatic sensor on most flash units.

**Application:** Accessories such as our UltraBounce are not shadow softening devices

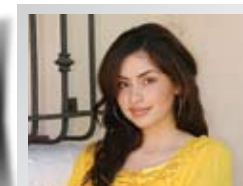
themselves since they are not materially larger than the flash itself. These accessories are actually light distribution devices. By spreading the light over 180° it can be bounced back into the frame by nearby walls and ceilings. The device is particularly useful when using large softboxes and umbrellas to spread the light over a wider area.

**Approximate Light Loss:** Variable depending on ceiling/wall distances.

**Dimensions:** Folds flat to 2 ¼" x 3 ¼"



Direct Flash



UltraBounce

## Soft Screen Model # LQ-051D

The **Soft Screen** is a camera mounted flash diffuser that softens the harsh light emitted from digital SLR pop-up flashes. It installs into the hot shoe and has optional Velcro® for more secure attachment.



**Application:** To soften harsh shadows and reduce red-eye.

**Dimension:** Folds flat to 3 7/8" x 4 1/2"



Direct Flash



Soft Screen

## FXtra Model # LQ-121

The **FXtra** is a compact gel holder that facilitates a quick installation and removal of colored gels. Eight Rosco gels are

included in the integrated storage pouch: CTO, 1/2 CTO, 1/4 CTO, Plus Green, 1/2 Plus Green, Sky Blue, Canary Yellow, and Fire Red. FXtra is sized to use with most popular flashes and the gel pocket accommodates the Strobist collection and both Rosco and Lee gel samples. Any LumiQuest accessory (and many other brands) can be attached while the FXtra is in place allowing you to colorize the light while using a variety of light modifiers.



**Application:** To colorize the light easily with or without other LumiQuest accessories in place.

**Approximate Light Loss:** Varies with gel.

**Dimensions:** 6 1/2" x 2 3/4"



## FX Model # LQ-111

The **FX** is a colored gel system that includes an assortment of five theatrical colored gels: blue, green, red, yellow and amber.

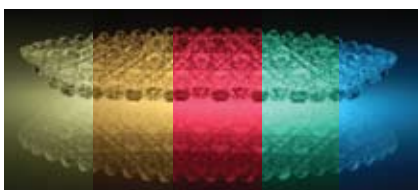
The FX filter holder holds these gels or any of your own. It is designed to fit most flash models and enables the photographer to quickly and conveniently colorize the light for a variety of special effect applications. The system folds flat and comes with a convenient storage pouch.



**Application:** Colorize the light for a variety of special effects.

**Approximate Light Loss:** Depends on the gel.

**Dimensions:** Folds flat to 3 3/8" x 4 3/4"



## Snoot XTR

Model # LQ-115  
*patent pending*

The **Snoot XTR** isolates the light to a very specific area, approximately 10°. The telescoping extender enables the photographer to consistently isolate



the light to an area of 5° or less. Automatic operation will be affected as illuminated area is limited; bracketing and/or testing is recommended.

**Application:** To illuminate a specific area of a scene with little or no effect on the surrounding area. Great as a hair or accent light.

**Dimensions:** Folds flat to 5 3/4" x 7 1/4"



Direct Flash



Snoot XTR

## Metallic Inserts

Model # LQ-112, Model # LQ-113

The **Metallic Inserts** attach with hook and loop dots to the bounce surface of the Pocket Bouncer, 80-20, Ultrasoft or Big Bounce to further modify the quality of light.



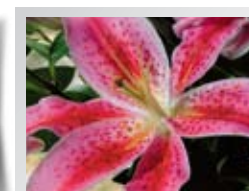
**Applications:** The silver insert adds a specular look to highlights; it is particularly useful for weddings. The gold insert adds a warm tone to the scene; it is particularly useful for outdoor fill flash.

**Approximate Light Loss:** (Installed on Pocket Bouncer, 80-20) Silver: 2/3 stop. Gold: 1 stop. (Installed on Ultrasoft) Silver: 1 2/3 stops. Gold: 2 stops. (Installed on Big Bounce) Silver: 2 1/2 stops. Gold: 2 2/3 stops.

**Dimensions:** For Pocket Bouncer, 80-20 and Ultrasoft 4" x 7"; For Big Bounce 8" x 10 1/2"



Gold Metallic Insert



Silver Metallic Insert

## ProMax Accessory Kit Model # LQ-106

The **ProMax Accessory Kit**

adds flexibility to your LumiQuest 80-20 and/ or Pocket Bouncer. The Accessory Kit includes a white insert, gold and silver Metallic Inserts, and a frosted diffusion screen.



**Applications and Light Loss:**

**White Insert:** To be used with a LumiQuest 80-20 where low ceilings are not available or in situations where more direct but soft fill light is desired.

**Approximate Light Loss:** 1 1/3 stops

**Gold Metallic Insert:** To add a warm tone to the scene.

**Approximate Light Loss:** 1 stop

**Silver Metallic Insert:** To add a specular look to highlights.

**Approximate Light Loss:** 2/3 stop

**Frosted Diffusion Screen:** To diffuse the light further for close-ups and portraits.

## UltraStrap Model # LQ-126 *patent pending*

The **UltraStrap** is the most secure, non-adhesive flash accessory mounting strap available. The marriage of neoprene and Velcro® loop results in a strap that applies a constant 3 lb. tension to the flash with a non skid surface. The rugged UltraStrap attaches to most flashes in seconds to provide a secure attachment point for all LumiQuest accessories. Actually, applications for the UltraStrap are limitless. Think of it anytime you want to temporarily but securely attach just about anything else!



**Dimensions:** 1" x 11"

